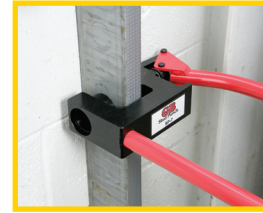
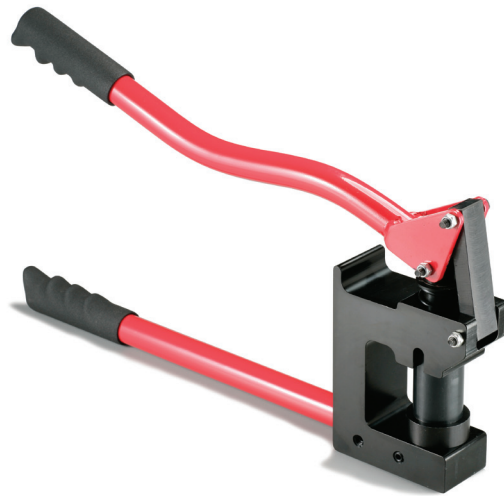


Stud Punch

Punches 1¹/₃₂" holes for 1/2" to 1" conduit or pipe.

- Features a spring loaded sleeve that increases the life and accuracy of the punch while providing a smoother cutting action.
- Easily punches "H" studs without damaging flanges.
- Automatic stripper.
- High-leverage design permits punching holes in aluminum studs and mild steel (up to 20-gauge) with minimum effort.
- From the center of the punch to the back of the housing measures 2".



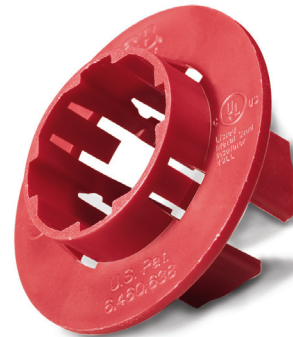
Part #	Description	Weight	Punch #	Weight	Die #	Weight
SP-7	Stud Punch Kit	6 lbs	43-52	1 lb	43-95	1 lb



Stud Insulators

One piece design insulating 360° protection for cable runs through metal studs.

- Fits all pre-punched and field punched hole sizes and configurations.
- Unique folding tabs for fast, one-handed installations.
- Meets NEC article 300-4(b) and CEC rule 12-516.



Part #	Pkg Qty	Description
SI-25N	25/bag	Metal Stud Insulators

